

Packaged Fluid Milk in California - Container Survey

Percentage of Total Fluid Milk Products Sold, by Size of Container October of Selected Years: 2009, 2010, 2011, 2012, 2013, 2014

Year	3, 5, 6 Gallon	1 Gallon	1/2 Gallon	Quart	1/3 Quart (10 oz.)	Pint	1/2 Pint & (8 oz. Pouch)	4 oz. (Pouch)	12, 14 oz.	Other
Percent										
2009	0.77%	65.90%	21.60%	2.66%	0.19%	0.42%	7.86%	0.09%	0.27%	0.24%
2010	0.94%	66.72%	19.82%	2.78%	0.17%	0.39%	8.09%	0.10%	0.61%	0.38%
2011	0.78%	70.06%	15.29%	2.44%	0.20%	0.59%	9.78%	0.11%	0.08%	0.66%
2012	0.76%	68.42%	16.17%	2.52%	0.17%	0.63%	9.98%	0.11%	0.13%	1.12%
2013	0.76%	68.61%	16.17%	2.61%	0.14%	0.41%	10.20%	0.07%	0.60%	0.43%
2014	0.70%	64.75%	17.42%	2.68%	0.13%	0.43%	11.45%	0.11%	0.71%	1.62%

Percentage of Total Fluid Milk Products Sold, by Type of Container October of Selected Years: 2009, 2010, 2011, 2012, 2013, 2014

Year	Glass	Paper	Plastic	Bag
Percent				
2009	0.03%	23.90%	75.54%	0.53%
2010	0.02%	22.64%	76.36%	0.98%
2011	0.10%	18.22%	80.65%	1.02%
2012	0.17%	19.34%	79.30%	1.19%
2013	0.21%	20.94%	77.90%	0.95%
2014	0.27%	23.14%	75.73%	0.86%

- The top three containers of fluid milk sold in California for October 2014 were: gallon plastic containers (64.8%); half gallon paper containers (17.4%); and half pint paper containers (11.5%).

Source: October 2014 Fluid Milk Sales Container Survey for California, completed by CDFA Dairy Marketing Branch, December 2014

Upcoming Changes to the Data Statistics Release:

- Starting with the January 2015 statistics data, the data tables will be released in two phases:
 - Dairy Product tables will be released approximately the 18th-21st of the month.
 - Milk Production and Pooling tables will be released approximately the 27th-30th of the month.
- The Dairy Information Bulletin will no longer be published as a monthly newsletter, however the tables will continue to be posted to the website with the option of downloading in PDF or excel formats.
- The new format of the tables will resemble the USDA standard table format. The statistics webpage will include periodic postings of visual charts/graphs, similar to previous DIB cover displays.

California Minimum Class Prices

Hundredweight Prices

Class	Nov.	Dec.	Jan.
1 No. Calif.	\$24.33	\$23.72	\$19.49
So. Calif.	\$24.60	\$23.99	\$19.76
2 No. Calif.	\$23.71	\$20.25	\$20.25
So. Calif.	\$23.94	\$20.48	\$20.48
3	\$23.66	\$20.20	\$20.20
4a	\$18.14	N/A	N/A
4b	\$18.70	N/A	N/A

Quota Transfer Summary

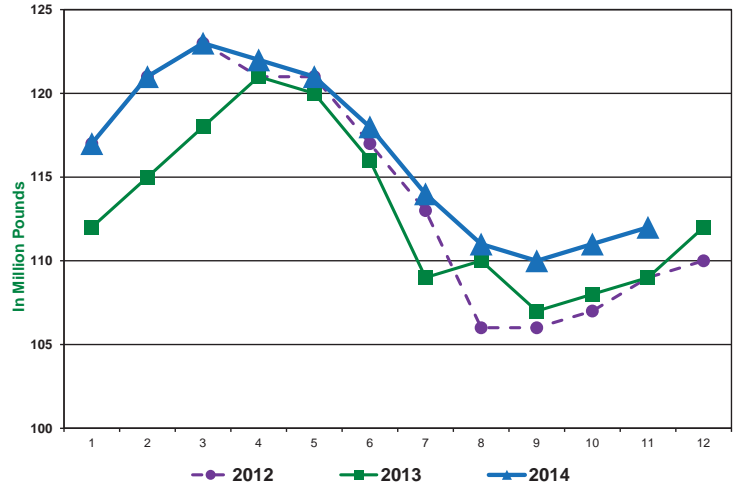
Quota Transfers	Oct.	Nov.	Dec
Number of Sellers	3	3	6
Pounds of SNF Quota Transferred	4,809	3,587	8,935
Average Price Per Pound of SNF Quota	\$525	\$525	\$522

California Pool Prices

Pool Price	Sept.	Oct.	Nov.
Quota	\$24.15	\$23.19	\$20.70
Overbase	\$22.45	\$21.49	\$19.00

California Milk Production

Average Daily Basis: 2012, 2013, 2014



February 2012 Milk Production included 29 days.

California Milk Production Cost Comparison, by Region, 2013-2014

Quarter	North Coast		North Valley		South Valley		Southern California		Statewide Weighted Average	
	2013	2014	2013	2014	2013	2014	2013	2014	2013	2014
<i>Dollars per Hundredweight</i>										
1st Quarter										
Total Costs	\$24.44	\$24.89	\$17.64	\$16.73	\$17.57	\$16.19	\$16.96	\$16.11	\$17.69	\$16.56
Total Costs & Allowances*	\$26.14	\$26.92	\$19.08	\$18.38	\$19.06	\$17.84	\$18.38	\$17.76	\$19.16	\$18.22
2nd Quarter										
Total Costs	\$22.52	\$23.50	\$17.00	\$17.07	\$16.81	\$16.72	\$16.57	\$15.73	\$16.98	\$16.93
Total Costs & Allowances*	\$24.19	\$25.34	\$18.42	\$18.69	\$18.27	\$18.33	\$17.88	\$17.33	\$18.42	\$18.55
3rd Quarter										
Total Costs	\$22.94	\$25.74	\$17.58	\$17.75	\$17.73	\$17.75	\$17.16	\$17.03	\$17.76	\$17.88
Total Costs & Allowances*	\$24.71	\$27.69	\$19.13	\$19.43	\$19.35	\$19.44	\$18.70	\$18.75	\$19.35	\$19.58

*Includes an allowance for management and a return on investment.

California Alfalfa Hay Monthly Weighted Average Prices – Delivered

Week Ending	Nov. 28, 2014		Dec. 5, 2014		Dec. 12, 2014		Dec. 19, 2014	
	Tons	Price Range	Tons	Price Range	Tons	Price Range	Tons	Price Range
Tulare, Hanford Areas								
Supreme	N/A	-	200	\$335	N/A	-	940	\$320-\$340
Premium	N/A	-	1,000	\$290-\$320	N/A	-	1,529	\$290-\$300
Good	N/A	-	0	No Sales	N/A	-	2,000	\$235
Fair	N/A	-	200	\$225	N/A	-	200	\$220
Escalon, Modesto, Turlock Areas								
Supreme	N/A	-	2,125	\$320-\$335	N/A	-	135	\$320-\$325
Premium	N/A	-	1,325	\$305-\$310	N/A	-	50	\$310
Good	N/A	-	0	No Sales	N/A	-	0	No Sales
Fair	N/A	-	350	\$220-\$235	N/A	-	375	\$200

Source: The Hoyt Report, Inc.

Federal Order Minimum Class Prices

Hundredweight Prices

Class I	Nov.	Dec.	Jan.
Phoenix, Arizona	\$26.41	\$24.88	\$20.93
Portland, Oregon	\$25.96	\$24.43	\$20.48
Boston (Northeast)	\$27.31	\$25.78	\$21.83
Class III	\$21.94	N/A	N/A

USDA Dairy Cow Culling Activity

Week Ending	Region 9 ¹ Dairy Cows	U.S. Dairy Cows	West Region ² Price Range
	Head	Head	\$/cwt.
11/14/14	15,800	56,500	\$82-\$99
11/21/14	15,100	55,300	\$90-\$112
11/28/14	13,100	46,100	N/A
12/05/14	16,800	61,900	\$86-\$96

¹ Region 9 includes AZ, CA, HI and NV

² West region includes AZ, NV, UT, CA, ID, OR and WA

Source: USDA Market News: Report LM_CT168 and SJ_LS714

USDA Commercial Cold Storage Report

Month	Butter		American Cheese		Nonfat Dry Milk	
	2013	2014	2013	2014	2013	2014
<i>In Million Pounds</i>						
January	207	138	644	631	249	149
February	240	164	667	628	225	182
March	255	180	680	639	218	214
April	310	174	699	648	208	239
May	321	193	714	656	227	221
June	319	186	711	655	230	229
July	296	170	705	660	207	250
August	269	165	670	662	194	243
September	233	146	661	631	145	178
October	182	139	626	623	111	195
November	122	101	614	635	114	N/A
December	112		618		133	

Source: USDA, Farm Services Agency, NASS Cold Storage and Dairy Products. (As published in the Dairy Market News)

USDA Milk-Feed Price Ratio

USDA reports that the milk-feed price ratio for November 2014 was 2.80 (down from 2.91 in October 2014). The current ratio of 2.80 means that a dairy producer can buy 2.80 pounds of feed for every pound of milk sold. The prices used to calculate the November 2014 milk-feed price ratio were: corn \$3.57/bushel; soybeans \$10.10/bushel; baled alfalfa hay \$184/ton; all-milk price \$23.40/cwt. (decreased from \$24.90 in October 2014).

Prices used to calculate the milk-feed price ratio are based on U.S. prices and don't necessarily reflect California prices.

National Dairy Situation & Outlook USDA Estimates

Milk Production

Monthly: USDA estimates overall milk production across the U.S. increased 3.4% in November 2014, compared to November 2013. USDA reports that California milk production increased 2.2% compared to November 2013 (on same number of cows and 40 more pounds of milk per cow). Among other western states, compared to November 2013, Arizona was up 5.4%; New Mexico was down 0.5%; and Washington was up 5.0%. Only one of the top 10 milk producing states reported a production decrease. The largest increase was reported by Utah at 7.9% growth in milk production (on 3,000 more cows and 80 more pounds of milk per cow).

Quarterly: For the third quarter of 2014 compared to the second quarter of 2014, U.S. milk cow numbers increased to 9.271 million head, milk production per cow decreased to 5,518 pounds; the net effect was a decrease in milk production to 51.2 billion pounds. USDA projects that for the fourth quarter of 2014 compared to the third quarter of 2014, milk cow numbers will increase to 9.285 million head, production per cow will slightly decrease to 5,510 pounds; the net effect would be same in milk production as 51.2 billion pounds.

Milk Prices

Comparing the third quarter of 2014 to the second quarter of 2014, U.S. average all-milk prices increased to \$24.37/cwt. USDA projects that for the fourth quarter of 2014, U.S. average all-milk prices will be \$23.10-\$23.30/cwt.; Class III prices will be \$21.20-\$21.40/cwt.; and Class IV prices will be \$18.75-\$19.05/cwt.

Utility Cow Prices

Comparing the third quarter of 2014 to the second quarter of 2014, average U.S. utility cow prices were up \$12.70/cwt. to a national average of \$111.27/cwt. USDA projects that utility cow prices will average \$108-\$111/cwt. in the fourth quarter of 2014.

Top Ten Milk Production States - Nov. 2014

(Percent Change from Same Month/Previous Year)

1. California	+2.2%	6. Texas	+7.7%
2. Wisconsin	+2.8%	7. Michigan	+7.0%
3. Idaho	+4.0%	8. Minnesota	+3.1%
4. New York	+3.8%	9. New Mexico	-0.5%
5. Pennsylvania	+3.5%	10. Washington	+5.0%


Information from the USDA-NASS publication "Milk Production" and the USDA-ERS publication: "Livestock, Dairy, and Poultry Outlook."

Milk Mailbox Prices in Dollars per Hundredweight - 2014

2014 Mailbox Milk Prices

Reporting Areas	Jan	Feb	March	April	May	June	July	Aug	Sept	Oct	Nov	Dec
Dollars Per Hundredweight												
California	\$22.04	\$22.67	\$23.36	\$23.13	\$21.72	\$21.60	\$21.32	\$22.27	\$23.31			
New England States	\$24.68	\$25.94	\$26.30	\$26.41	\$25.91	\$24.92	\$25.06	\$25.94				
New York	\$23.64	\$25.06	\$25.58	\$25.66	\$25.16	\$24.08	\$24.27	\$25.25				
Eastern Pennsylvania	\$23.75	\$25.10	\$25.48	\$25.58	\$25.12	\$24.07	\$24.20	\$25.17				
Appalachian States	\$24.59	\$25.41	\$25.96	\$25.78	\$25.77	\$24.68	\$25.27	\$26.46				
Southeast States	\$24.62	\$25.69	\$26.10	\$25.83	\$26.12	\$24.85	\$25.83	\$27.29				
Southern Missouri	\$23.69	\$24.57	\$24.92	\$24.64	\$24.63	\$23.66	\$24.44	\$25.77				
Florida	\$25.33	\$26.77	\$27.27	\$27.13	\$27.41	\$25.78	\$27.40	\$28.67				
Western Pennsylvania	\$23.69	\$25.20	\$25.61	\$25.77	\$24.87	\$23.70	\$23.83	\$24.89				
Ohio	\$23.68	\$24.92	\$25.24	\$25.38	\$24.45	\$23.34	\$23.61	\$24.66				
Indiana	\$23.03	\$24.22	\$24.46	\$24.51	\$23.87	\$22.61	\$22.96	\$24.31				
Michigan	\$22.94	\$24.28	\$24.62	\$24.66	\$23.90	\$22.97	\$23.08	\$23.99				
Wisconsin	\$23.51	\$25.31	\$25.34	\$25.91	\$24.38	\$22.91	\$23.16	\$23.96				
Minnesota	\$23.48	\$25.48	\$25.43	\$26.06	\$24.47	\$22.85	\$23.11	\$23.98				
Iowa	\$23.84	\$25.44	\$25.75	\$25.97	\$24.83	\$23.48	\$23.76	\$24.61				
Illinois	\$23.75	\$25.50	\$25.61	\$25.81	\$24.80	\$23.33	\$23.61	\$24.63				
Corn Belt States	\$22.77	\$24.24	\$24.39	\$24.51	\$23.32	\$21.84	\$21.84	\$22.59				
Western Texas	\$22.73	\$24.31	\$24.32	\$24.42	\$22.96	\$21.43	\$21.56	\$22.37				
New Mexico	\$21.53	\$22.90	\$22.96	\$22.94	\$21.77	\$20.25	\$20.25	\$21.10				
Northwest States	\$23.73	\$24.63	\$25.36	\$24.97	\$23.85	\$23.29	\$23.47	\$24.38				
All Federal Order Areas	\$23.47	\$24.91	\$25.18	\$25.33	\$24.37	\$23.11	\$23.36	\$24.29				

California mailbox price calculated by CDFA Dairy Marketing Branch
All federal milk market order weighted average, as calculated by USDA.

If you would like to receive an email notification when this publication is posted to the website, please go to: www.cdfa.ca.gov/dairy and click on  Web Posting Email Notification to subscribe to the Dairy Marketing Branch Email Notifications.



California Department of Food and Agriculture
Karen Ross, Secretary

Dairy Marketing Branch

1220 N Street

Sacramento, CA 95814

The California Department of Food and Agriculture Dairy Marketing Branch publishes the California Dairy Review monthly. Please direct any comments or subscription requests to Karen Dapper or Lu Tang at (916) 900-5014, or send an email to dairy@cdfa.ca.gov

Milk Pricing Information:

800-503-3490 or 916-442-MILK

Dairy Marketing Branch:

Phone (916) 900-5014; Fax (916) 900-5341

Website: www.cdfa.ca.gov/dairy

Email: dairy@cdfa.ca.gov